

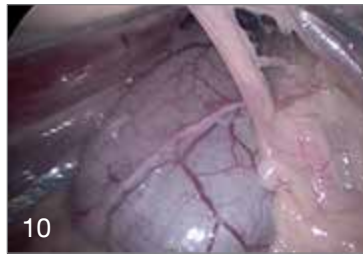
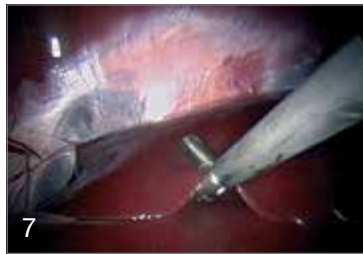
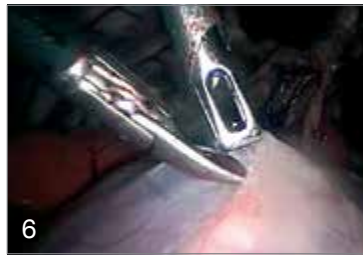


## Laparoscopy and Thoracoscopy in Small Animals

## Laparoscopy and Thoracoscopy in Dogs and Cats

The 5 mm HOPKINS® telescope from KARL STORZ provides the small animal practitioner with bright, enlarged views of all abdominal and thoracic organs through a tiny incision.

Biopsy and/or aspiration of the following organs can be achieved: liver, kidney, pancreas, spleen, gall bladder, lymph nodes, lung and gastrointestinal tract.



**Fig. 1**  
Adrenal gland

**Fig. 2**  
Cirrhotic liver

**Fig. 3**  
Cryptorchid testicle

**Fig. 4**  
Feline gallbladder:  
hepatic lipidosis

**Fig. 5**  
Laparoscopic-assisted  
gastropexy

**Fig. 6**  
Pericardial resection

**Fig. 7**  
Liver biopsy

**Fig. 8**  
Pancreatic biopsy

**Fig. 9**  
Thoracic mesothelioma

**Fig. 10**  
Urinary bladder

Endoscopic photographs courtesy of Dr. David Twedt, Colorado State University.



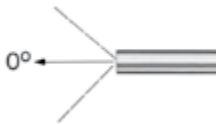
Ancillary instrumentation, such as biopsy forceps, graspers and scissors may be placed through additional 5 mm portals. This allows not only documentation and biopsy of abnormalities, but also a number of therapeutic minimally invasive surgical interventions including the following:

- Cryptorchid castration
- Prophylactic gastropexy
- Ovariohysterectomy
- Cystotomy
- Jejunostomy/gastrostomy tube placement
- Adrenalectomy
- Pericardectomy
- Partial lung lobectomy
- Nephrectomy
- Insulinoma removal
- Partial pancreatectomy
- Resolution of gastric dilatation with volvulus
- Lap-assisted cystostomy
- Lap-assisted cystopexy

Laparoscopy and thoracoscopy will vastly improve your diagnostic and surgical accuracy, while reducing patient recovery time and improving client satisfaction.

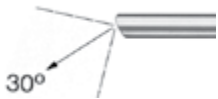
## HOPKINS® Laparoscopes/Thorascopes

Multiple Puncture Approach  
Telescopes, diameter 5 mm  
Trocars size 6 mm



62046 AA

**HOPKINS® Straight Forward Telescope 0°**, enlarged view, diameter 5 mm, length 29 cm, **autoclavable**, fiber optic light transmission incorporated, color code: green



62046 BA

**HOPKINS® Forward-Oblique Telescope 30°**, enlarged view, diameter 5 mm, length 29 cm, **autoclavable**, fiber optic light transmission incorporated, color code: red

## TERNAMIAN EndoTIP Cannula with Multifunctional Valve



60160 TKR

**TERNAMIAN ENDOTIP Cannula**, size 6 mm, color code: black, including:  
**Cannula**, with thread and rotatable insufflation stopcock, working length 8.5 cm  
**Multifunctional Valve**  
**Seal Set**, 50/4  
**Mandrel**, for opening automatic valves

60103 TMR

**Same**, size 11 mm, working length 10.5 cm



62141 DB

**Reducer**, 11/5 mm

## Trocar with multifunctional valve



- 62160 WZ **Trocar**, size 6 mm,  
color code: black-white  
including:  
**Trocar only**, with pyramidal tip  
**Cannula**, without valve, with insufflation stopcock,  
working length 8.5 cm  
**Multifunctional Valve**, size 6 mm
- 62103 WZ **Same**, size 11 mm

## For HASSON Technique

To establish pneumoperitoneum without the use of a VERESS needle or sharp trocar



- 30160 C3 **Ribbed Cone**, with 2 discs for fixation of sutures,  
for trocars size 6 mm,  
color code: black



- 30160 X **Trocar only**, with blunt tip

## Diagnostic Instruments



62175 T

**Palpation Probe**, with cm-markings,  
size 5 mm, length 36 cm



66321 DB

**CLICKLINE Dissecting and Biopsy Forceps**,  
rotating, dismantling, with connector pin for  
unipolar coagulation, with LUER-Lock irrigation  
connector for cleaning, single action jaws,  
size 5 mm, length 36 cm  
including:  
**Plastic Handle**, without ratchet  
**Metal Outer Sheath**, insulated  
**Forceps Insert**



66323 ML

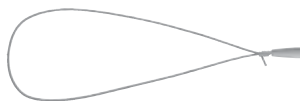
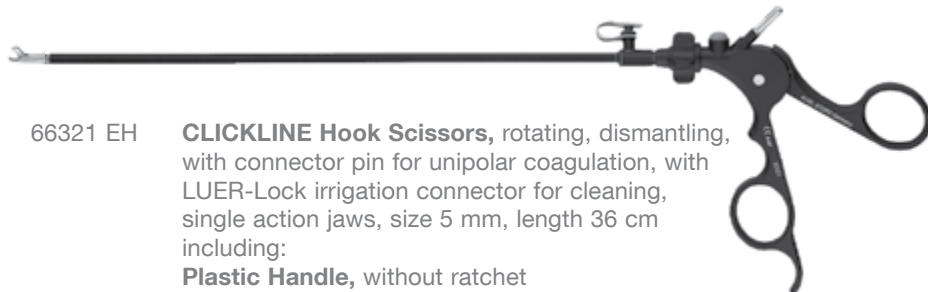
**CLICKLINE Dissecting and Grasping Forceps**,  
rotating, dismantling, with connector pin for  
unipolar coagulation, with LUER-Lock irrigation  
connector for cleaning, double action jaws, long,  
size 5 mm, length 36 cm  
including:  
**Plastic Handle**, with hemostat style ratchet  
**Metal Outer Sheath**, insulated  
**Forceps Insert**

## Suture, Ligature



66321 EH

**CLICKLINE Hook Scissors**, rotating, dismantling,  
with connector pin for unipolar coagulation, with  
LUER-Lock irrigation connector for cleaning,  
single action jaws, size 5 mm, length 36 cm  
including:  
**Plastic Handle**, without ratchet  
**Metal Outer Sheath**, insulated  
**Scissors Insert**



26172 AE

**Endo-Loop Ligature**, with ROEDER knot,  
for bleeding stumps, with absorbable synthetic  
suture, for single use, sterile, USP 0, size 3 mm,  
length 33 cm, package of 12

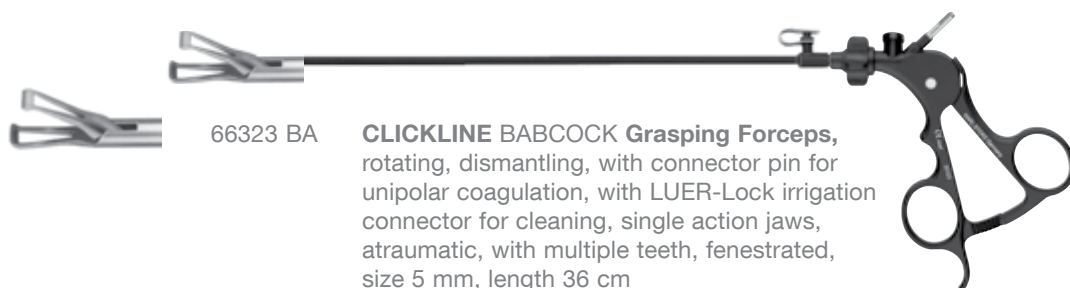


26596 SK

**KÖCKERLING Knot Tier**, for extracorporeal knotting,  
size 5 mm, length 36 cm



## Surgical Instruments



66323 BA

**CLICKLINE BABCOCK Grasping Forceps**, rotating, dismantling, with connector pin for unipolar coagulation, with LUER-Lock irrigation connector for cleaning, single action jaws, atraumatic, with multiple teeth, fenestrated, size 5 mm, length 36 cm including:

**Plastic Handle**, with hemostat style ratchet

**Metal Outer Sheath**, insulated

**Forceps Insert**



33321 FG

**CLICKLINE Grasping Forceps**, rotating, dismantling, insulated, with connector pin for unipolar coagulation, with LUER-Lock irrigation connector for cleaning, double action jaws, atraumatic, size 5 mm, length 36 cm, including:

**Plastic Handle**, without ratchet

**Metal Outer Sheath**, insulated

**Forceps Insert**



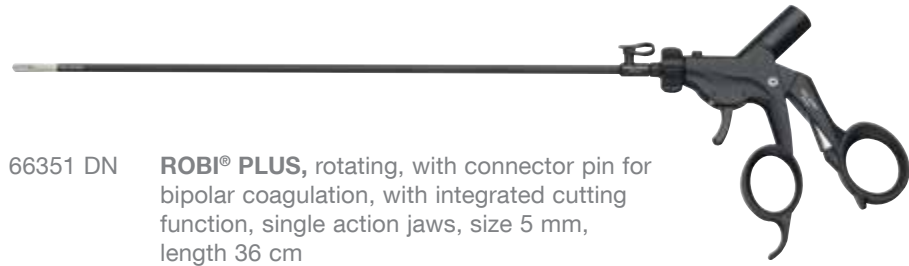
66321 MW

**CLICKLINE Scissors**, rotating, dismantling, insulated, with connector pin for unipolar coagulation, with LUER-Lock irrigation connector for cleaning, double action jaws, serrated, curved, conical, size 5 mm, length 36 cm including:

**Plastic Handle**, without ratchet

**Metal Outer Sheath**, insulated

**Scissors Insert**



66351 DN **ROBI® PLUS**, rotating, with connector pin for bipolar coagulation, with integrated cutting function, single action jaws, size 5 mm, length 36 cm including:  
**Ring Handle**, bipolar, with activator for cutting function  
**Outer Sheath**, insulated  
**Knife Sheath**  
**Forceps Insert**  
**Knife Blade**, package of 6

66451 DN **Same**, length 42 cm

66100 **Knife Blade**, package of 6, for use with Bipolar Instruments 66351 DN and 66451 DN



33533 DU **CLICKLINE DUVAL Grasping Forceps**, rotating, dismantling, without connector pin for unipolar coagulation, with irrigation connection for cleaning, double action jaws, size 10 mm, length 36 cm including:  
**Metal Handle**, with hemostat style ratchet  
**Outer Sheath**, insulated  
**Forceps Insert**

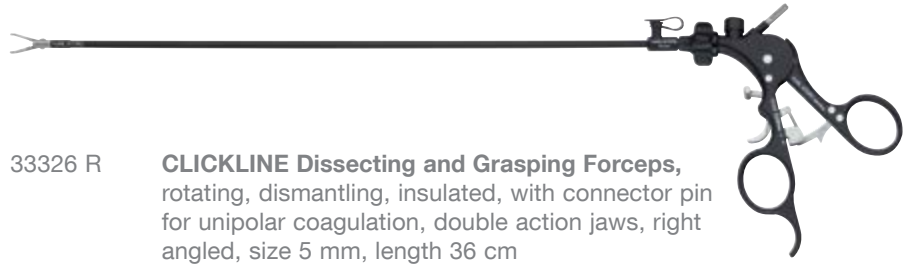
For instruments in longer and shorter versions, see catalog Veterinary Endoscopy, Small Animals.





33326 R

**CLICKLINE Dissecting and Grasping Forceps**, rotating, dismantling, insulated, with connector pin for unipolar coagulation, double action jaws, right angled, size 5 mm, length 36 cm including:  
**Plastic Handle**, with disengageable ratchet  
**Outer Sheath**, insulated  
**Forceps Insert**



33541 RG

**Same**, size 10 mm,  
**Metal Handle**, with disengageable ratchet



30623 F

**Fan Retractor**, dismantling, distendable, size 5 mm, length 36 cm



30623 FP

**Same**, size 10 mm

## Suction and Irrigation Tubes



37360 LH **Suction and Irrigation Tube**, with lateral holes, size 5 mm, length 36 cm, for use with suction and irrigation handles



37370 SC **Coagulating and Dissecting Electrode**, with suction channel, insulated sheath, with connector pin for unipolar coagulation, size 5 mm, length 36 cm



37370 DL **Same**, L-shaped



26173 BN **Suction and Irrigation Tube**, with lateral holes, with two-way stopcock for single-hand control, size 5 mm, length 36 cm

## Optional Suction Tube Accessories



30804 **Handle with Trumpet Valve**, for suction or irrigation, autoclavable, for use with 5 mm coagulating suction tubes and 5 mm suction and irrigation tubes



20300042 **Silicone Tubing Set**, for suction, sterilizable

## Insufflation



- 62432501 **CO<sub>2</sub> ENDO-ARTHROFLATOR-VET**,  
power supply 100 – 240 VAC, 50/60 Hz,  
including:  
**Silicone Tubing Set**, sterilizable  
**Universal Wrench**  
**Gas Filter\***, sterile, package of 10

The pressure hose and CO<sub>2</sub> bottles must be ordered separately



- 62120 J **VERESS Pneumoperitoneum Needle**,  
with spring-loaded blunt stylet, LUER-Lock,  
**autoclavable**, diameter 2.1 mm, length 10 cm

## Electrosurgical Unit



- 20530801 **AUTOCON® II 80**,  
power supply 100 – 240 VAC, 50/60 Hz,  
including:  
**Mains Cord**
- 20017834 **Two-Pedal Footswitch**, digital, one-stage,  
for use with AUTOCON® II 80
- 26005 M **Unipolar High Frequency Cord**, length 300 cm
- 26176 LE **Bipolar High Frequency Cord**, length 300 cm



\* mtp medical technical promotion gmbh, take-off GewerbePark 46,  
78579 Neuhausen ob Eck/Germany, Tel.: +49 (0)7467 94504-0, Fax: +49 (0)7467 94504-99,  
E-Mail: info@mtp-tut.com, www.mtp-tut.com

## Suction and Irrigation Device

The VETPUMP® 2 suction and irrigation device makes abdominal and thoracic lavage easier than ever before.

More powerful, more precise and safer than other units, the VETPUMP® 2 is the ultimate device for flushing and suction during otoscopy, gastroscopy, laparoscopy and more.



- 69321601 **VETPUMP® 2**, adjustable suction-irrigation pump,  
power supply: 100/120/230/240 VAC, 50/60Hz  
including:  
**Mains Cord**, EU-version  
**Mains Cord**, US-version  
**Irrigation Bottle Holder**  
**Suction Bottle Holder**  
**Irrigation Bottle**  
**Suction Bottle**  
**Bottle Cap**, for irrigation bottle  
**Bottle Cap**, for suction bottle

## VETPUMP® 2 Accessories for Abdominal / Thoracic Lavage



69320033 **Silicone Tubing Set**, irrigation-suction from unit to bottles, **autoclavable**



69811 **Instrument Tubing Set**, to connect VETPUMP® 2 bottles to Handle 37112 A



37112 A **Handle**, straight, with clamping valve, for suction and irrigation, **autoclavable**, for use with 5 and 10 mm suction and irrigation tubes



69811 LAP **Adaptor**, for use with Suction and Irrigation Handle 37112 A plus Instrument Tubing Set 69811, package of 5



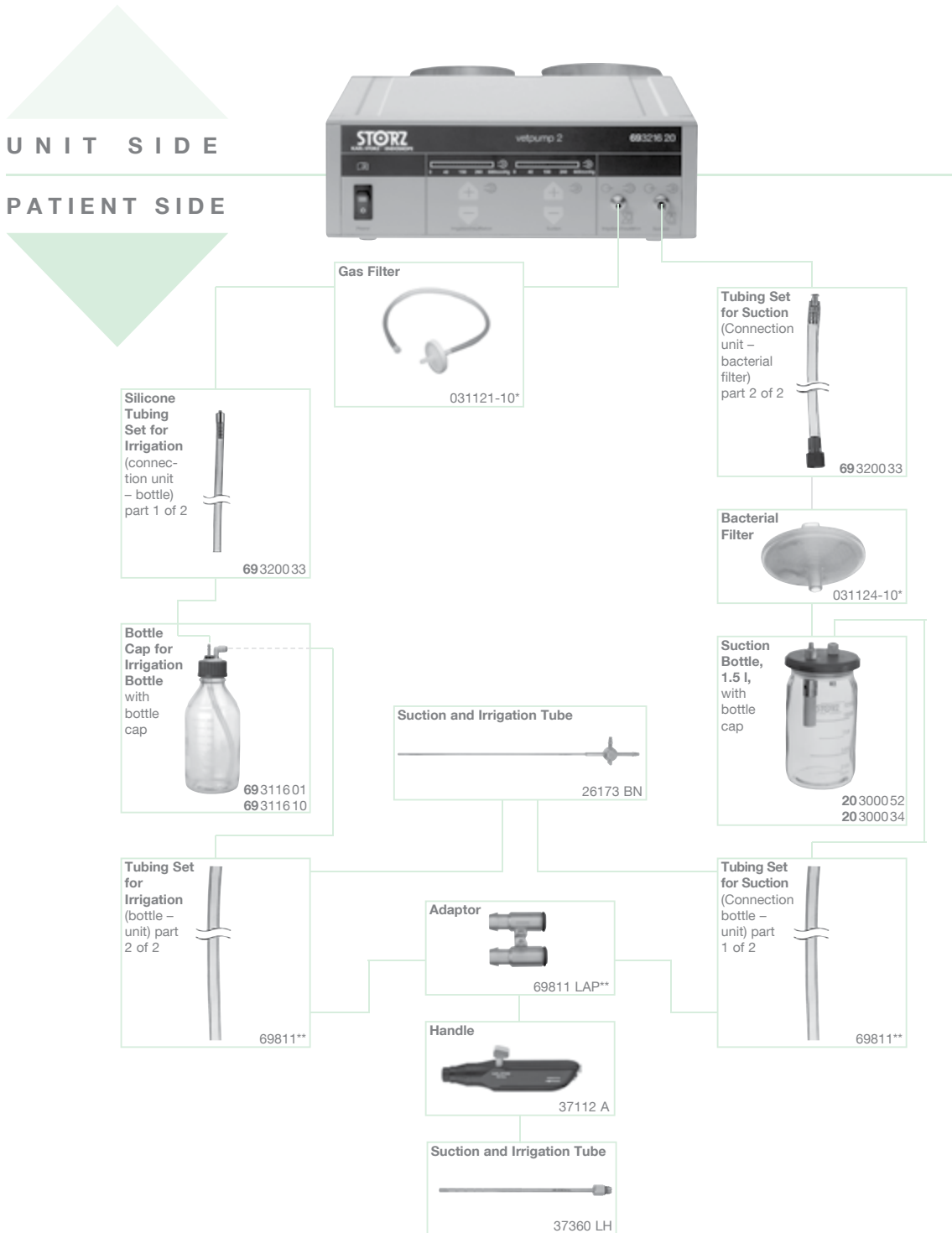
031121-10\* **Gas Filter**, for single use, with male LUER-lock connector for attachment to irrigation connector on unit, sterile, package of 10



\* mtp medical technical promotion gmbh, take-off GewerbePark 46,  
78579 Neuhausen ob Eck/Germany, Tel.: +49 (0)7467 94504-0, Fax: +49 (0)7467 94504-99,  
E-Mail: info@mtp-tut.com, www.mtp-tut.com

# VETPUMP® 2

## System Components



\*\* Remove black plastic fitting from Tubing Set 69811 and replace with Adaptor 69811 LAP.



mtp medical technical promotion gmbh, take-off GewerbePark 46,  
78579 Neuhausen ob Eck/Germany, Tel.: +49 (0)7467 94504-0, Fax: +49 (0)7467 94504-99,  
E-Mail: info@mtp-tut.com, www.mtp-tut.com





KARL STORZ Veterinary Endoscopy America Inc.  
175 Cremona Drive  
Goleta, CA 93117, USA  
Phone: +1 805/968-7776  
Fax: +1 805/685-2588  
E-Mail: [info@karlstorzvet.com](mailto:info@karlstorzvet.com)

KARL STORZ GmbH & Co. KG  
Mittelstraße 8, 78532 Tuttlingen, Germany  
Postbox 230, 78503 Tuttlingen, Germany  
Phone: +49 (0)7461 708-0  
Fax: +49 (0)7461 708-105  
E-Mail: [vet@karlstorz.com](mailto:vet@karlstorz.com)

[www.karlstorz.com](http://www.karlstorz.com)